

(Endorsed by the Marsden SHS P & C Association)

INTRODUCTION:

Marsden State High is a “uniform” school. The uniform is to be worn in its complete form at school and when travelling to and from school. The P & C of Marsden SHS supports a student dress code (uniform) for Marsden SHS because it believes that a student dress code promotes objectives of Education (General Provisions) Bill 2006. In particular, the P & C supports the intention of a student dress code in providing a safe and supportive teaching and learning environment by:

- ready identification of students and non-students at school;
- eliminating distraction of competition in dress and fashion at school;
- fostering a sense of belonging; and
- developing mutual respect among students through minimising visible evidence of economic or social differences.

Our student dress code consists of an agreed standard and items of clothing, which are defined as a school uniform that our students wear when:

- attending or representing Marsden SHS;
- travelling to and from school; and
- engaging in school activities out of school hours.

It is impossible to develop a code to meet everyone’s individual requirements, styles or needs. Our school’s dress code promotes the good image of the school within the community, and encourages students to uphold and enhance that image, as well as meeting community expectations and health and safety standards. A neat, complete uniform and tidy appearance shows pride in self and school. It projects a positive image to employers and the community.

Marsden SHS provides excellent educational opportunities for all students and expects that parents will support us in our endeavours by making sure students are well dressed and presented in our uniform everyday for school.

For physical education classes, and sport, students are required to wear full sports uniform. Students are to **change into sports uniform** at the beginning of the physical education lesson and change back into day wear immediately after the lesson. Sports uniform is **not** to be worn to other classes.

OUR UNIFORM STANDARDS:

Make-up is not allowed. Only clear nail polish may be worn.

Hair colours must be natural:- Dreadlocks, multiple plaits and other extreme styles are not acceptable. Multiple or extreme hair adornments are not appropriate.

Jewellery - only the following may be worn

A **single sleeper or stud** earring in each ear, (in silver or gold) and a **watch** may be worn.

Necklaces: only fine gold or silver that cannot be seen;

Any pendants **MUST** be on a long chain that cannot be seen.

Facial piercing is not permitted even if covered with a band-aid.



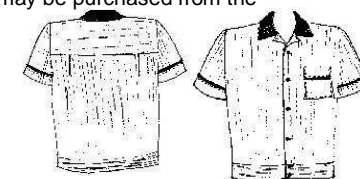
Shoes

Parents and students are reminded that appropriate shoes are part of the Code of Dress. Workplace Health and Safety regulations apply to certain areas of the school. **Black leather, lace up** college style shoes give the best protection to students feet. Shoes must have black leather uppers and black laces with **no white or coloured decoration** on the shoe. Synthetic or imitation leather, suede or other fabric shoes are not acceptable and should not be worn at school. High heeled or platform shoes are not permitted.

Boys Junior school uniform (Grade’s 8, 9 & 10)

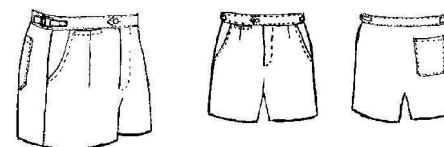
Shirt

Tan with white stripe cleolene polyester/cotton fabric. The collar is chocolate brown, the sleeves have a 1 cm chocolate brown trim in the hem stitching line, as does the pocket which is on the left side. Six chocolate brown buttons (four on the body of shirt, two on the band). Stripes to run horizontally on yoke and hip band and vertically for the remainder of the shirt. There is no commercial pattern available for the shirt, however pre-cut kits and ready made shirts may be purchased from the Uniform Shop.



Shorts

Chocolate brown gaberdine or drill, with fly front and adjustable tabs on both sides.



Trousers

(Optional for winter months) chocolate brown gaberdine or drill. Extra pockets (as in cargo pants) are not permitted on trousers or shorts. Cropped trousers are not permitted. Brown jeans are not permitted.

Jacket (optional)

Chocolate brown fleecy fabric with two 2.5 cm ivory bands in upper left sleeve and ivory embroidered school logo. Two in-seam pockets and press stud front opening.



Sweater

Chocolate brown fleecy fabric with two 2.5 cm ivory bands in upper left sleeve and ivory embroidered school logo.

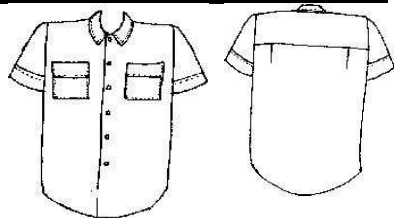
Socks: Tan coloured, long or short.



Boys Senior School Uniform (Grade's 11 & 12)

Shirt

Short sleeves tuck-in style, in honey spotlight polyester/cotton fabric with two tucks onto the back yoke, peak collar, two pockets and seven buttons (matching). Sleeves and pockets have top-stitched hem finish and left pocket has embroidered school logo.



Shorts/Trousers/Socks/Sweater (*optional*) (as per junior boys uniform)

Tie

Three colours with stripes of chocolate brown, cream and caramel.

Pullover

Chocolate brown wool/acrylic blend with a V neck.

Boys sports wear:- Junior and Senior

Shirt - Polo Style

Caramel with chocolate collar and placket, in poly/cotton pique knit fabric. School badge screen printed on left chest. (Available only through the School).

Shorts

A brown rugby-knit short with an elasticised drawstring waist, two in-seam pockets, and Marsden printed on the lower leg are available from the Uniform Shop or chocolate brown Ruggers are acceptable for sport and PE only, not for day wear.

Socks

Tan coloured or for team sports chocolate brown with two white stripes on turn-down tops.

Shoes

Sports shoes with white or non-marking soles to be worn only during sport of HPE lesson.

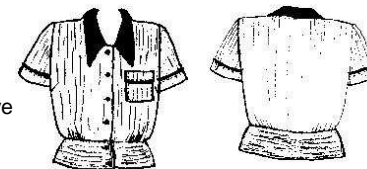
Hats

The wearing of hats is optional but highly recommended. Cloth hats and caps are available from the uniform shop.

Girls Junior school uniform (Grade's 8, 9 & 10)

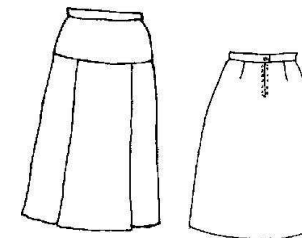
Blouse

Tan with white stripe Cleolene polyester/cotton material; short sleeved style with peplum at waist. Collar, 1 cm sleeve trim and 1 cm pocket trim in chocolate brown; six chocolate brown buttons (four on the body of blouse, two on the peplum). Stripes to run horizontally on peplum only. There is no commercial pattern for the blouse or skirt. However pre-cut kits and ready made blouse can be purchased from the Uniform Shop



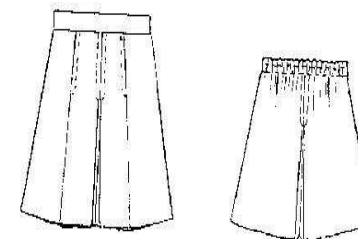
Skirt

Chocolate brown viscose/rayon fabric with a back zip, fob and side concealed pockets and worn knee length. Front has two knife pleats inverted onto a scooped yoke. No commercial pattern available, pre-cut and ready made skirts available from Uniform Shop.



Culottes

Culottes (*optional*) chocolate brown viscose/rayon fabric with side zip and side concealed pocket. Back waistband is elasticised. Front has two knife pleats stitched down to hipline.



Jacket (*optional*)

Chocolate brown fleecy fabric with two 2.5cm ivory bands in upper left sleeve and ivory embroidered school logo. Two in-seam side pockets and press stud front opening.



Sweater

Chocolate brown fleecy fabric with two 2.5 cm ivory bands in upper left sleeve and ivory embroidered school logo.

Tights

Natural or brown colours may be worn.

Slacks

(*optional* for winter months) Chocolate brown viscose/rayon fabric (same as skirt). Butterick pattern No 3474. Browns jeans are not permitted. Cargo pants and cropped trousers are not permitted.

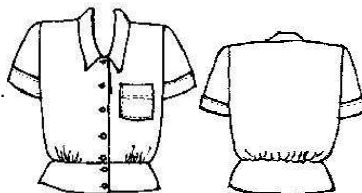


Socks: Tan coloured, long or short.

Girls Senior school uniform (Grade's 11 & 12)

Blouse

Short sleeved style with peplum waist, bust darts, v-neck with collar. Made in honey-spotlight polyester/cotton fabric. Seven matching buttons, (five on the body of blouse, two on the peplum). Sleeves and pocket have topstitched hem finish and pocket has embroidered school logo. There is no commercial pattern for the blouse or skirt. However ready made blouses and pre-cut kits can be purchased from the Uniform Shop.



Skirt /Tights/Socks/Culottes/Slacks/Sweater (as per junior uniform)

Pullover

Chocolate brown wool/acrylic blend with a v-neck. Available from the uniform shop.

Girls Sports Wear

Shirt - Polo Style

Caramel with chocolate collar, and placket in poly/cotton pique knit fabric. School badge screen printed on left chest. (Available only through the school).

Skirt (optional)

Brown netball style knife pleated back, plain front wrap style. (With black sports briefs or bike pants worn under the skirt).

Shorts

A brown rugby-knit short with an elasticised drawstring waist, two in-seam pockets, and Marsden printed on the lower leg are now available from the Uniform Shop are acceptable for sport and PE only, not for day wear.

Socks

Tan socks or white sports socks.

Shoes

Sport shoes with white or non-marking soles, to be worn only during sport of HPE lesson.

Hats

The wearing of hats is optional but highly recommended. Cloth hats are available from the uniform shop

School Uniform Shop

Notice to parents of new students

The school uniform shop will be open for the sale of uniforms at times listed. Advice about opening times is available from the office. In general, the Uniform Shop is open during school terms on Tuesday and Friday mornings between 8.00am and 12.00 noon and Wednesday afternoons between 12.30 pm and 3.30 pm. Payments can be made by cash, cheque or EFTPOS.

For your convenience all junior and senior uniforms will be available from the shop. This shop is run by the Parents & Citizens' Association as a service to the school community. A small stock of second-hand uniforms is also available at very reasonable prices. Fabric can be purchased by the metre from the shop. The prices of the uniforms are more than comparable with outside sources. The convenor can be contacted on 3299 0519. Special opening hours prior to the commencement of the academic year will be advertised on the price list, available from the school on enrolment.

IMPLEMENTATION:

Uniform:

Students not in the full & correct school uniform on any day must:

- supply a written note from parent/caregiver giving an adequate explanation as to the reasons why they are out of uniform and detailing when the correct uniform will be obtained.
- this note is to be given to the relevant House Coordinator **BEFORE SCHOOL**. Class time missed obtaining this slip will incur a lunchtime detention. If students are late they need to report to their relevant Deputy Principal after signing in at the office.
- The Coordinator will issue the student with a "green slip" that they must keep with them all day.

In cases where the alternative is deemed an unacceptable variation or infringement, parents/caregivers will be notified to assist in rectifying the problem. Students who arrive at school not in full uniform will be directed to the office where second-hand uniforms will be supplied on loan for the day; loan uniform items must be returned washed and ironed within two (2) school days.

NON-COMPLIANCE:

At Marsden SHS we impose sanctions on a once only basis per episode of non-compliance. Our sanctions are reflective of the severity and recentness of the non-compliance and are limited to one of the following:

- Imposing a detention for a student during lunch or after school (if after school, inform parents before detention occurs);
- Preventing student from attending, or participating in, any activity for which student is representing school; or
- Preventing student from attending or participating in any school activity that is not an essential school educational program.

In resolving matters of student dress codes, the school considers:

- Mobile families requiring sufficient time to purchase items of dress;
- Economic hardship requiring special arrangements, or an extended period of time, to purchase new items of dress;
- Students with physical impairments requiring greater flexibility in interpretation of dress codes; and

We provide our Student Dress Code policy to parents at the time of enrolment as part of the Enrolment Package. The Marsden SHS community is very proud of its uniform and we encourage parents/caregivers to support the school by upholding our fair and reasonable dress standards.

