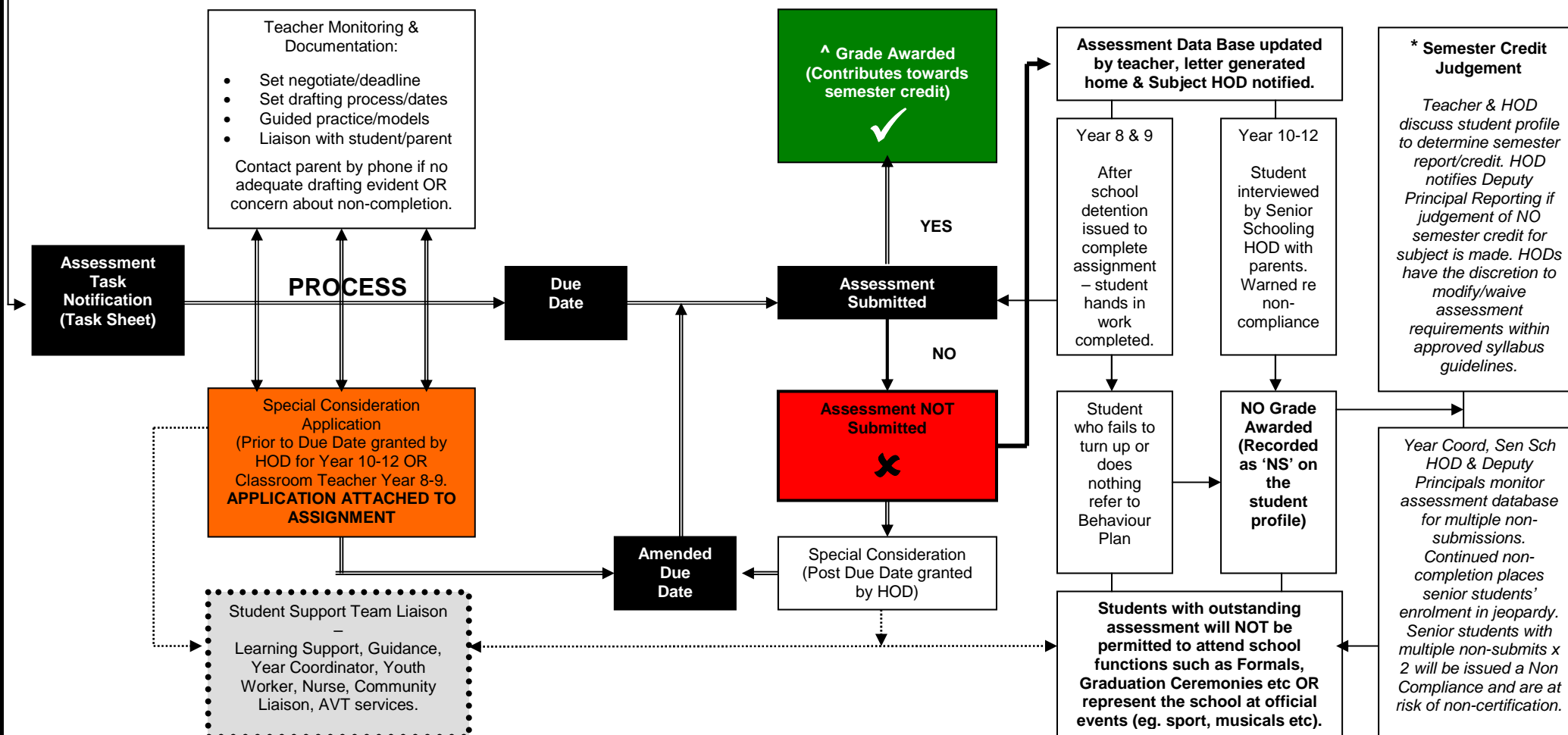


Non-Submission/Completion of Assessment Process

This policy reflects:

- Our goal to maximise opportunities for students to receive a result for all assessment pieces/subjects;
- The importance of developing responsibility and commitment in young people;
- An awareness of the increasing complexity of life for young people and the resultant demands on their time;
- A progression of strategies designed to support and facilitate the completion of assessment requirements by students; and
- A focus upon proactive strategies facilitating completion of required assessment and communication among all parties before the due date.



^ QSA policy does not allow a 'sliding scale penalty' to be applied to late assessment (i.e. deducting a grade for each day late). Consequently ALL assessment submitted late must be accompanied by a Special Consideration Application- HOD judgement and discretion will be applied.

* Student profiles are to be recorded as 'NS', indicating non-submission/completion of work. Students who fail to submit work may lose semester credit.